



IPMA®
Delta

IPMA®

international
project
management
association

Moving Organisations Forward



The competence for managing projects, programmes and portfolios
is necessary for the success of an organisation

IPMA®
international
project
management
association

The main benefits of using IPMA Delta®

IPMA DELTA ASSESSES THE COMPETENCE OF AN ORGANISATION, SUCH AS A COMPANY OR A PART OF A COMPANY OR A PUBLIC AGENCY.

THE MAIN BENEFITS OF USING IPMA DELTA ARE:

- » Know the project, programme and portfolio management competence status of your organisation based on an independent third-party assessment of experienced professionals
- » Identify best practices of project, programme and portfolio management in your organisation
- » Have a clear picture of the areas for improvement and development in order to be able to plan and conduct an improvement and development process with measurable objectives
- » Raise the visibility and significance of project, programme and portfolio management in your organisation
- » Achieve systematically **better results** in projects, programmes and portfolios
- » Improve your competitive market position, using the certificate to show professionalism to personnel, customers, partners and the community
- » Learn from experienced IPMA Delta® assessors and raise the exchange on the project, programme and portfolio management in your organisation
- » Achieve more certainty in an agile and VUCA world: Where is our organisation now and where you should lead it.



The main benefits of using IPMA Delta®

A OUR CUSTOMERS CONFIRMED THAT IPMA DELTA ACTS AS AN ENABLER TO IMPROVE THEIR PERFORMANCE.

EXAMPLES ARE:

IPMA Delta assessment is one major milestone in our process; to provide a clear and holistic view for the management and the whole organization and to give us the perspective to choose the next target areas for PPPM development.

says **MATS SÖDERLUND, DIRECTOR, ENERGY & CIVIL, FINLAND**

We shall be able, this way, to maintain our current position a leading supplier of public transportation services in the city and region of Berne.

states **RENÉ SCHMIED, CEO, BERNOBIL STÄDTISCHE VERKEHRSBETRIEBE BERN, SWITZERLAND**

I am proud of the fact that Thales Portugal is the first IPMA Delta® certified organization in Portugal. It is the recognition of Thales Portugal project, programme and portfolio management skill.

tells **JOÃO ARAÚJO, THALES PORTUGAL COUNTRY DIRECTOR**

JSC ASE is the first of the Russian companies that received the certificate of conformity to the IPMA Delta® 4th class of competence of the field of project management.

ascertains **VALERY LIMARENKO, THE HEAD JSC ASE, RUSSIA**

I think we would benefit from this competitive advantage in achieving our vision to be a leading whole-process engineering consulting service provider.

states **DR./MRS. SONG RUI, FOUNDER OF RAPM, CHINA**

The Kazakhstan PM Association has transformed the way we conduct business and has made a significant impact on a company.

tells **THE KGNT CEO, ALEXANDRA BEKISHEVA, ALMATY**

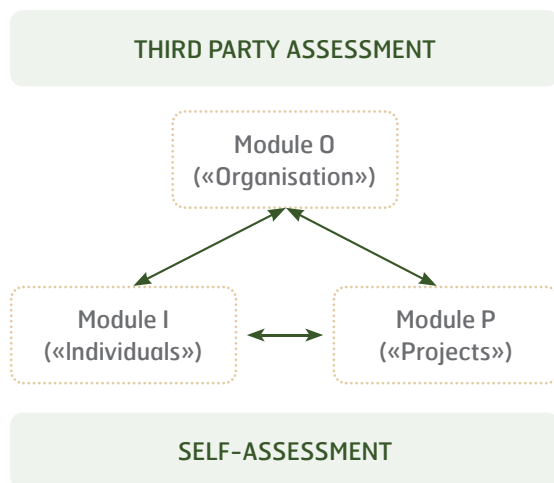


The IPMA Delta Certification is **mature**. It has been conducted in 13 countries.

The international certification regulations have been updated recently with this experience.

The certification IPMA Delta®

THE CERTIFICATION IS CALLED IPMA DELTA® BECAUSE IT IS BASED ON THE MODULES O, P AND I AND SHOWN AS THE **TRIANGLE** IN THE IPMA DELTA LOGO. AND IT IS **DIFFERENT** FROM OTHER CERTIFICATIONS.



Module O

Project, Programme and Portfolio Management Competence of the Organisation using questions in interviews based on the IPMA Organisational Competence Baseline
(IPMA OCB®)

Module P

Project, Programme and Portfolio Management Competence in selected projects and programmes using a self-assessment questionnaire based on the IPMA Project Excellence Baseline
(IPMA PEB)

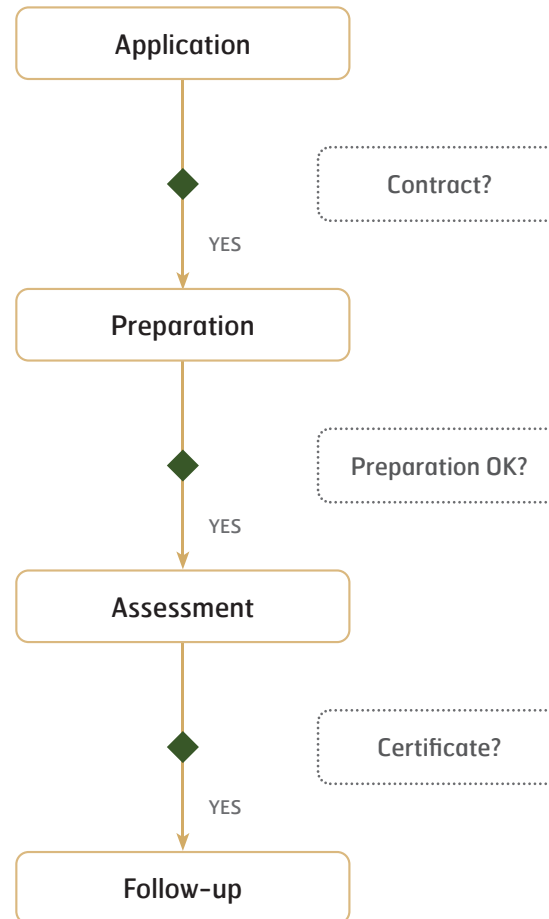
Module I

Project, Programme and Portfolio Management Competence of selected managers, team members and stakeholders using a self-assessment questionnaire based on the IPMA Individual Competence Baseline
(IPMA ICB®)





Certification process



CUSTOMER'S ACTIVITIES

Application

- » Request for information
- » Request for proposal from CB
- » Agree on contract

Preparation

- » Participation in Kick-off meeting
- » Deliver information in Project, Programme and Portfolio Management status lists

Assessment

- » Information to the stakeholders in the organisation
- » Deliver self-assessments I and P
- » Participation in on-site or on-line visits incl. document checks

Follow-up

- » Arrange for result presentation and hand-over
- » Feedback and testimonial to CB
- » Post-assessment activities

The certification IPMA Delta®



THE COMPETENCE EVALUATION WILL TAKE PLACE ON DIFFERENT LEVELS OF DETAIL, AND WITH THE **SCALE**:

- 1 INITIAL
- 2 DEFINED
- 3 STANDARDISED
- 4 MANAGED
- 5 OPTIMISING

Four organisation **categories** are used, depending on a set of criteria:
BASIC, MEDIUM, COMPLEX, EXTENSIVE.

The process will lead to an assessment **report** with recommendations, an overall average competence class and a certificate. The result can be explained in a presentation. The hand-over of the certificate can take place with a ceremony.





THE ASSESSMENT PROVIDES AN
INDEPENDENT, THIRD PARTY EVALUATION
OF THE COMPETENCE STATUS AND
RECOMMENDATIONS FOR FURTHER
DEVELOPMENT.

IPMA Delta does not depend on one method; the goal is to choose the best method for each task and situation.

The assessors can deal with different kinds of organisations (small, large, private, public, etc.) and projects (ICT, construction, product and organisation development, etc.).

IPMA® offers a whole family of Project, Programme and Portfolio Management competence certifications

For professionals

Project, Programme and Portfolio Management

Agile Project Management

Project Management by Consultants, Coaches and Trainers

For organisations

IPMA Delta®

IPMA® offers also Awards for professionals and project teams and the Registration of training courses and education programmes.

December 2021

CONTACT INFORMATION

If the Certification Body (CB) in your country offers IPMA Delta®, ask the IPMA Delta Manager of the CB for an information meeting.

For general questions you can contact the IPMA® Website: www.ipma.world/organisations/ and the IPMA Delta Product Management delta@ipma.world

IPMA®
international
project
management
association